

Acme Township VGT Development

Storm Water Run-Off

October 14, 2014

During the rain of this date our office made an onsite visit to the VGT in Acme Township.

The easterly basin did not appear to be discharging at the time it was observed. However, the discharge swale was filled with murky water at the end of the discharge pipe giving the appearance the pond had discharged. The poly blocks in the swale appeared to clear the water approximately 10 feet downstream. But as the flow continued down the swale it picked up silt and by the time it got to the end it was once again "chocolate" color. At the end of the swale the silt fence were separated and water was flowing through the separation in the silt fencing. In addition the straw bales were either missing at the opening of the silt fencing or being overwhelmed by the discharge.

The second discharge noted was at the wetland low area located between the east and west basins. The soil stockpiled along the south side of the site road has not been stabilized yet. Water pools at the base of the soil pile at the top of the wetland. Water is contained by silt fencing and two rows of straw bales. However, the water volume was over topping the silt fencing and first row of straw. It then was flowing under the second straw and creating a stream flow of water with silt into the wetland.

The two above conditions were observed by Clyde Johnson. I was approached by two gentlemen in a Rockford Construction pickup when I was leaving the site and they were informed of what I observed.

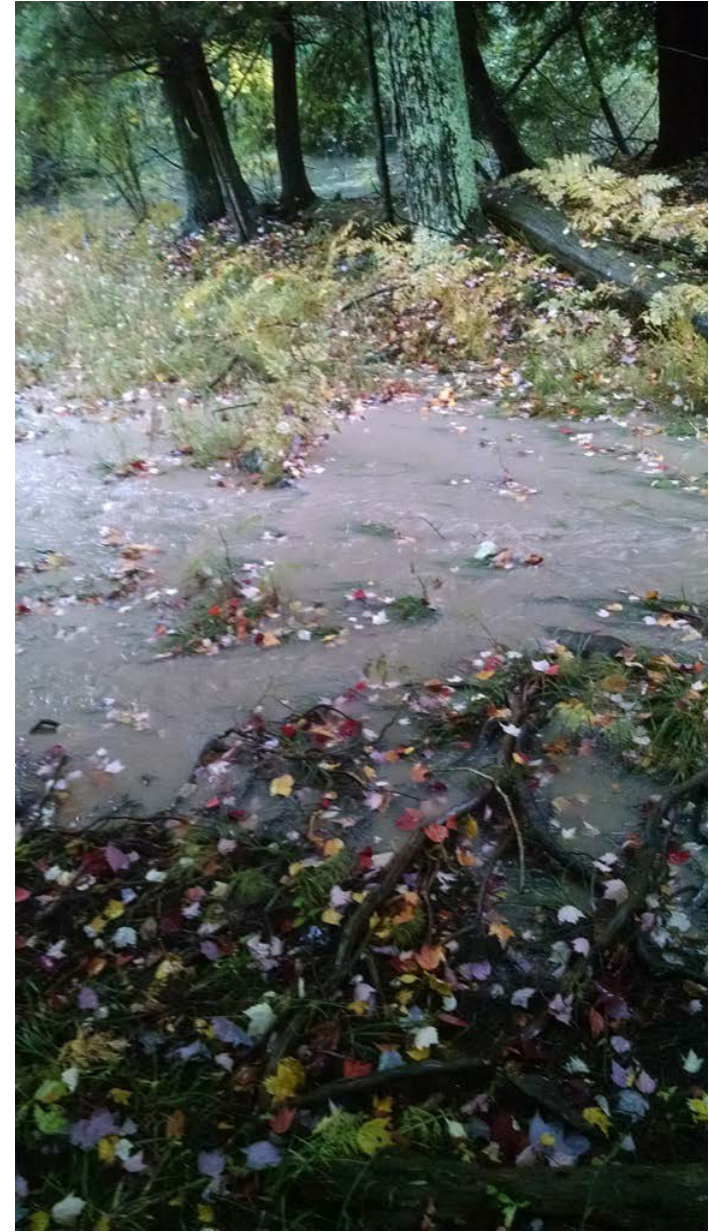
In addition, Bernie Jacobson observed a discharge to Acme Creek at the southeast corner of the site. Silt fencing at this location did not appear to be properly toed in.

Submitted By

Clyde L. Johnson, P.E.
Manager Engineering Services
MDEQ Storm Water Certification 03750
Bernie Jacobson DEQ Number 10523



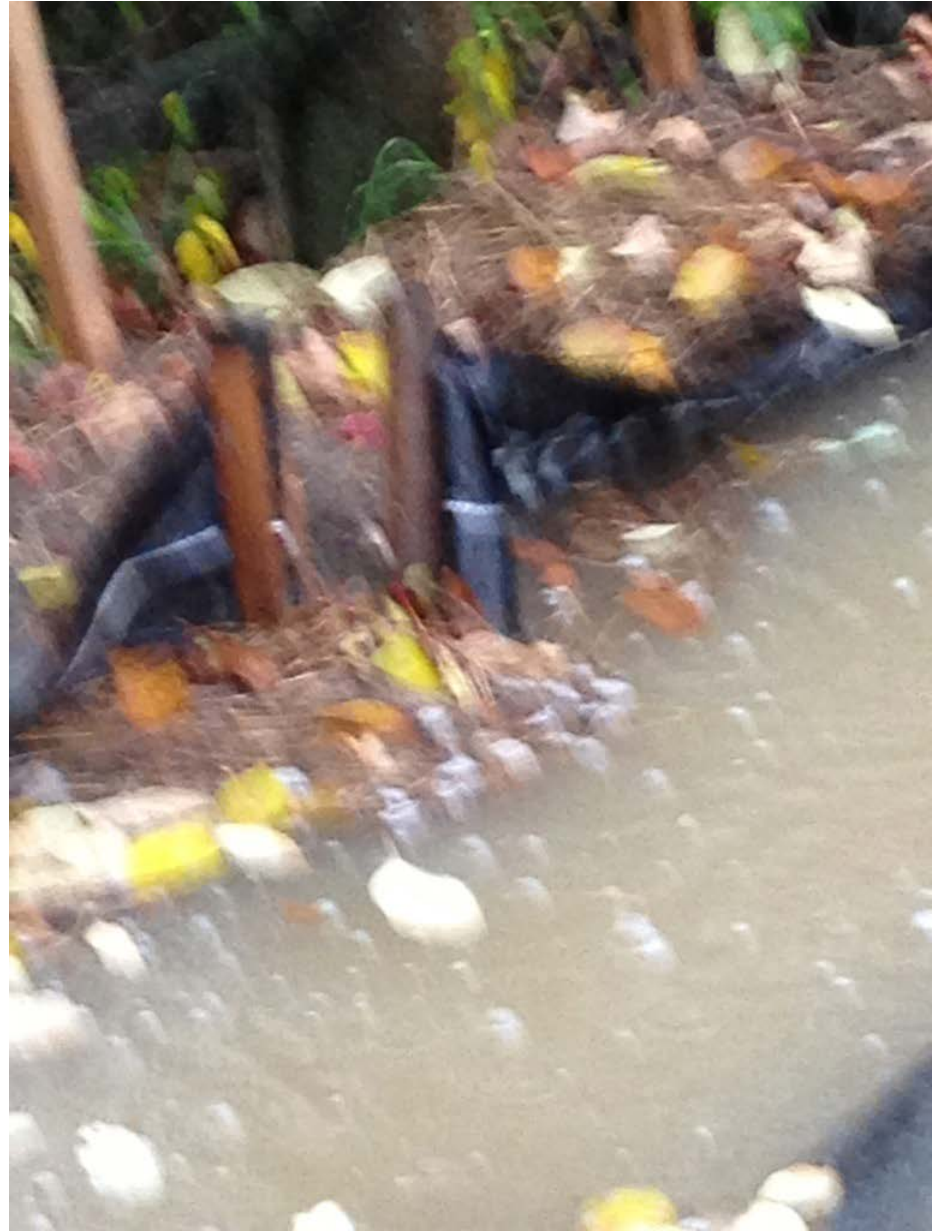
Containment at wetland



Discharge stream from SE corner of VGT to Acme Creek



Over topping silt fence and first straw at wetland area



Separated silt fence at end of West Basin VGT



Silt fence at SE corner of VGT site



Underflow of second straw at wetland