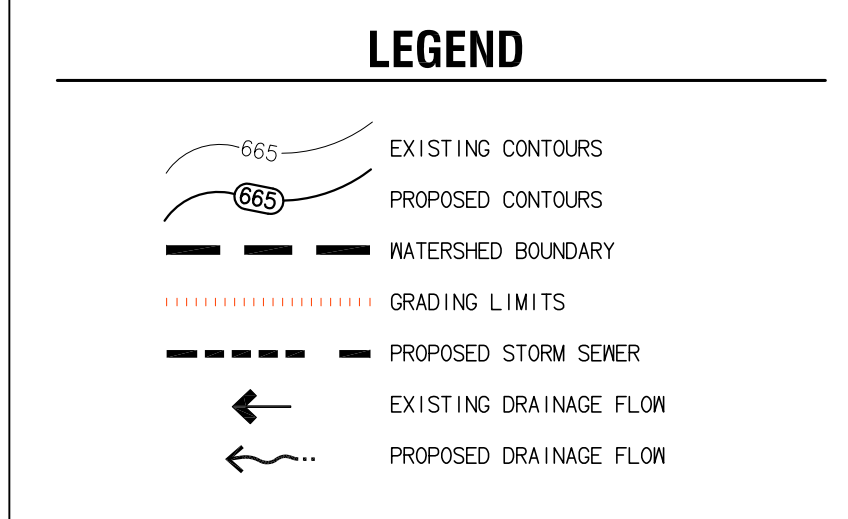


- GENERAL NOTES**
1. CONTOURS SHOWN ARE FOR REFERENCE ONLY.
  2. REFER TO SHEET C200 FOR LIMITS OF WORK BETWEEN SITE CONTRACTOR AND BUILDING CONTRACTOR.
  3. PROVIDE POSITIVE DRAINAGE AT ALL TIMES TO ENSURE NO STANDING WATER WITHIN PAVEMENT OR GREEN AREAS.
  4. RESTORE ALL STREET SURFACES, DRIVEWAYS, CULVERTS, ROADSIDE DRAINAGE DITCHES, AND OTHER PUBLIC OR PRIVATE STRUCTURES THAT ARE DISTURBED OR DAMAGED AS A RESULT OF CONSTRUCTION ACTIVITIES TO MATCH AT A MINIMUM EXISTING CONDITIONS.
  5. FINISHED SUBGRADE SURFACE SHALL NOT BE MORE THAN 0.1 FEET ABOVE OR BELOW ESTABLISHED FINISHED SURFACE ELEVATIONS AND ALL GROUND SURFACES SHALL VARY UNIFORMLY BETWEEN INDICATED ELEVATIONS. FINISHED DITCHES SHALL BE GRADED TO ALLOW FOR PROPER DRAINAGE WITHOUT PONING AND IN A MANNER THAT WILL MINIMIZE EROSION.
  6. LANDSCAPE BERMING ALONG M-72 AND LAUTNER ROAD WILL REQUIRE APPROXIMATELY 11,100 CY OF MATERIAL.
  7. ENTIRE AREA INSIDE BUILDING CONTRACTORS LIMIT OF WORK LINE TO BE EXCAVATED TO 10" BELOW FINISH FLOOR ELEVATION AND PROOF ROLLED. ALL SOFT SPOTS TO BE REMOVED AND REPLACED. ENTIRE AREA TO RECEIVE 6" MOOT 22A BASE COMPACTED TO 95% MAX. DENSITY. TOP OF BASE 4" BELOW FINISH FLOOR ELEVATION.

- BENCH MARK INFORMATION**
- BM #1 BENCH TIE N.N. SIDE P. POLE ELEVATION= 679.92 (NAVD88)
  - BM #3 BENCH TIE S. SIDE P. POLE ELEVATION= 686.01 (NAVD88)
  - BM #4 R.R. SPIKE W. SIDE P. POLE ELEVATION= 686.03 (NAVD88)
  - BM #5 BENCH TIE IN S. SIDE P. POLE ELEVATION= 692.41 (NAVD88)
  - BM #8 SPIKE IN S. SIDE P. POLE ELEVATION= 640.71 (NAVD88)
  - BM #9 SPIKE IN S. SIDE P. POLE ELEVATION= 671.24 (NAVD88)
  - BM #10 SPIKE IN S. SIDE P. POLE ELEVATION= 679.50 (NAVD88)
  - BM #11 SPIKE IN S. SIDE P. POLE ELEVATION= 684.18 (NAVD88)



**GRAND TRAVERSE TOWN CENTER**  
ACME TOWNSHIP, GRAND TRAVERSE COUNTY, MI

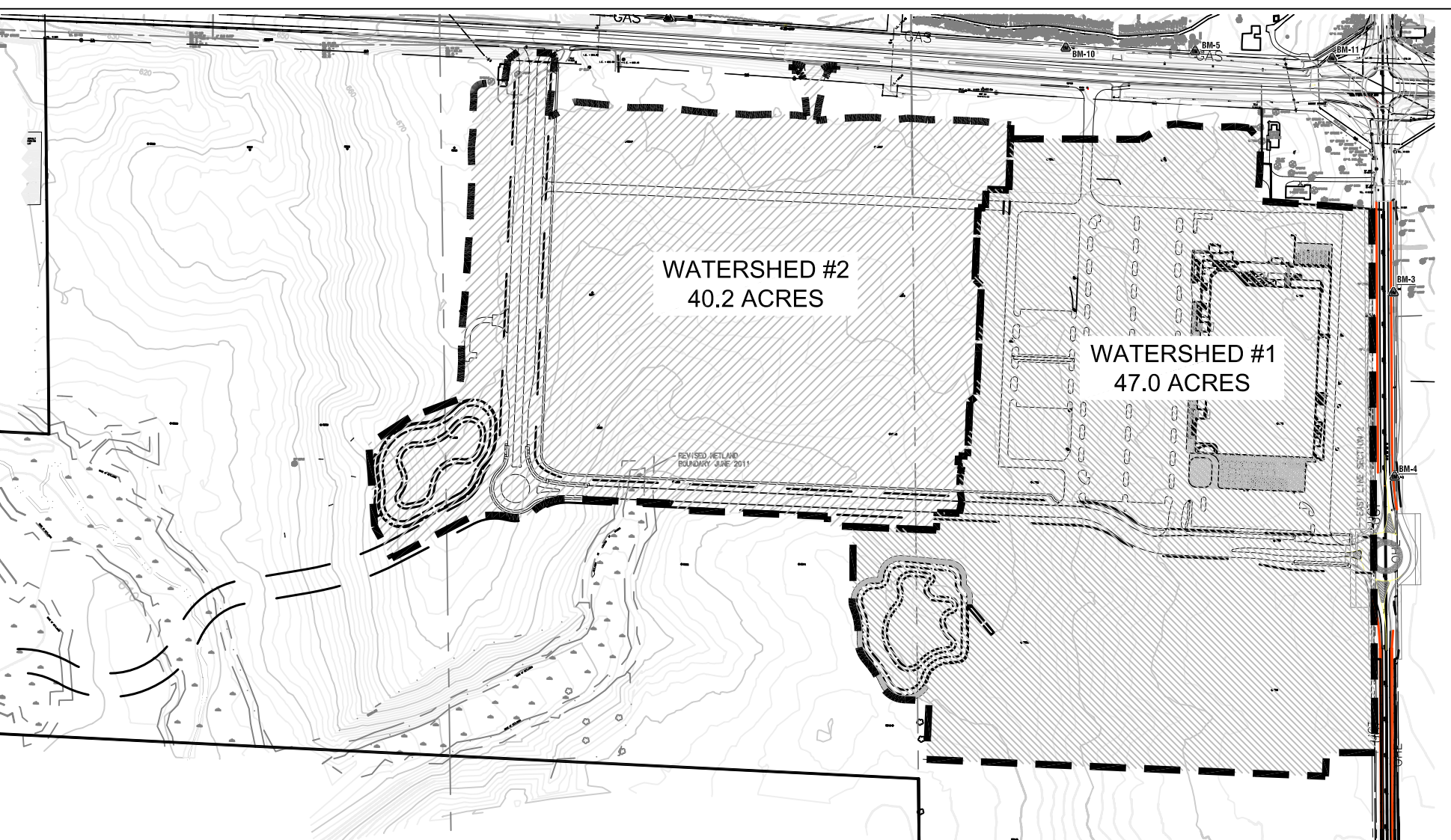
VILLAGE AT GRAND TRAVERSE, LLC  
CINCINNATI, OH 45209-1955  
3805 EDWARDS ROAD, SUITE 700  
(513) 241-5800

REVISION NO.	REVISION	REV. DATE
1	ISSUED FOR CONSTRUCTION	07/17/2013
2	BUILDING FOOTPRINT MOVED	3/6/2014
3	ADDITIONAL EARTHWORK	8/18/2014

DESIGNED BY:  
**ga Gourdie-Fraser**  
Municipal | Development | Transportation  
123 W. First Street, Traverse City, Michigan 49784  
Phone: (231) 946-0874, Fax: (231) 946-3703

**OVERALL GRADING PLAN**

DRAWN BY	ISSUE	ISSUE DATE	SHEET NO.
TGR			C300
CHECKED BY	MANAGER	GFA PROJECT NO.	GFA PROJECT NO.
TLMB	T. BOYD P.E.		12102



**SOIL EROSION AND SEDIMENTATION CONTROL MEASURES**

5	SEEDING	INEXPENSIVE AND VERY EFFECTIVE. STABILIZES SOIL. THIS MINIMIZING EROSION PERMITS RUNOFF TO INFILTRATE SOIL. REDUCING RUNOFF VOLUME SHOULD INCLUDE PREPARED TOPSOIL BED.
6	SEEDING w/ MULCH OR MATTING	FACILITATES ESTABLISHMENT OF VEGETATIVE COVER. EFFECTIVE FOR DRAINAGEWAYS w/ LOW VELOCITY. EASILY PLACED IN SMALL QUANTITIES BY EXPERIENCED PERSONNEL. SHOULD INCLUDE PREPARED TOPSOIL BED.
13	RIP-RAP, RUBBLE, GABIONS	USED WHERE VEGETATION IS NOT EASILY ESTABLISHED. EFFECTIVE FOR HIGH VELOCITIES OR HIGH CONCENTRATIONS. PERMITS RUNOFF TO INFILTRATE SOIL. DISSIPATES ENERGY FLOW AT SYSTEM OUTLETS.
24	GRASSED WATERWAY	MUCH MORE STABLE FORM OF DRAINAGEWAY THAN BARE CHANNEL. GRASS TENDS TO SLOW RUNOFF AND FILTER SOFT SEDIMENT. USED WHERE BARE CHANNEL WOULD BE ERODED.
57	GEOTEXTILE SILT FENCE	USES GEOTEXTILE AND POSTS OR BAILS MAY BE CONSTRUCTED OR PREPACKAGED EASY TO CONSTRUCT AND LOCATE AS NECESSARY.

**BASIN SCHEDULE**

BASIN NO.	NWL	25 YR HWL	100 YR HWL	BOTTOM	25 YR VOLUME
1	654.00	658.73	659.59	650.00	338,256 CF
2	648.00	652.48	653.31	644.00	282,981 CF